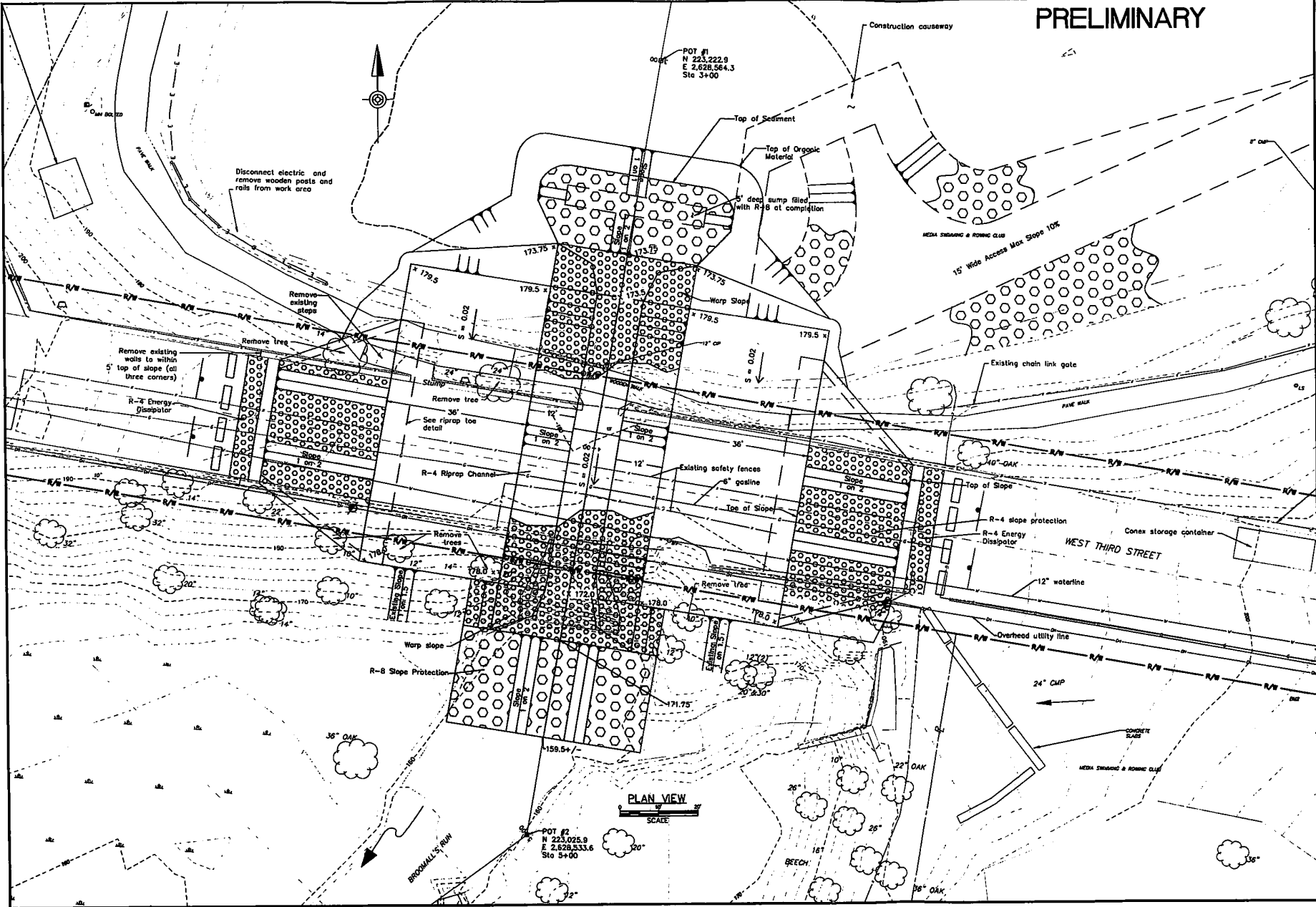


PRELIMINARY

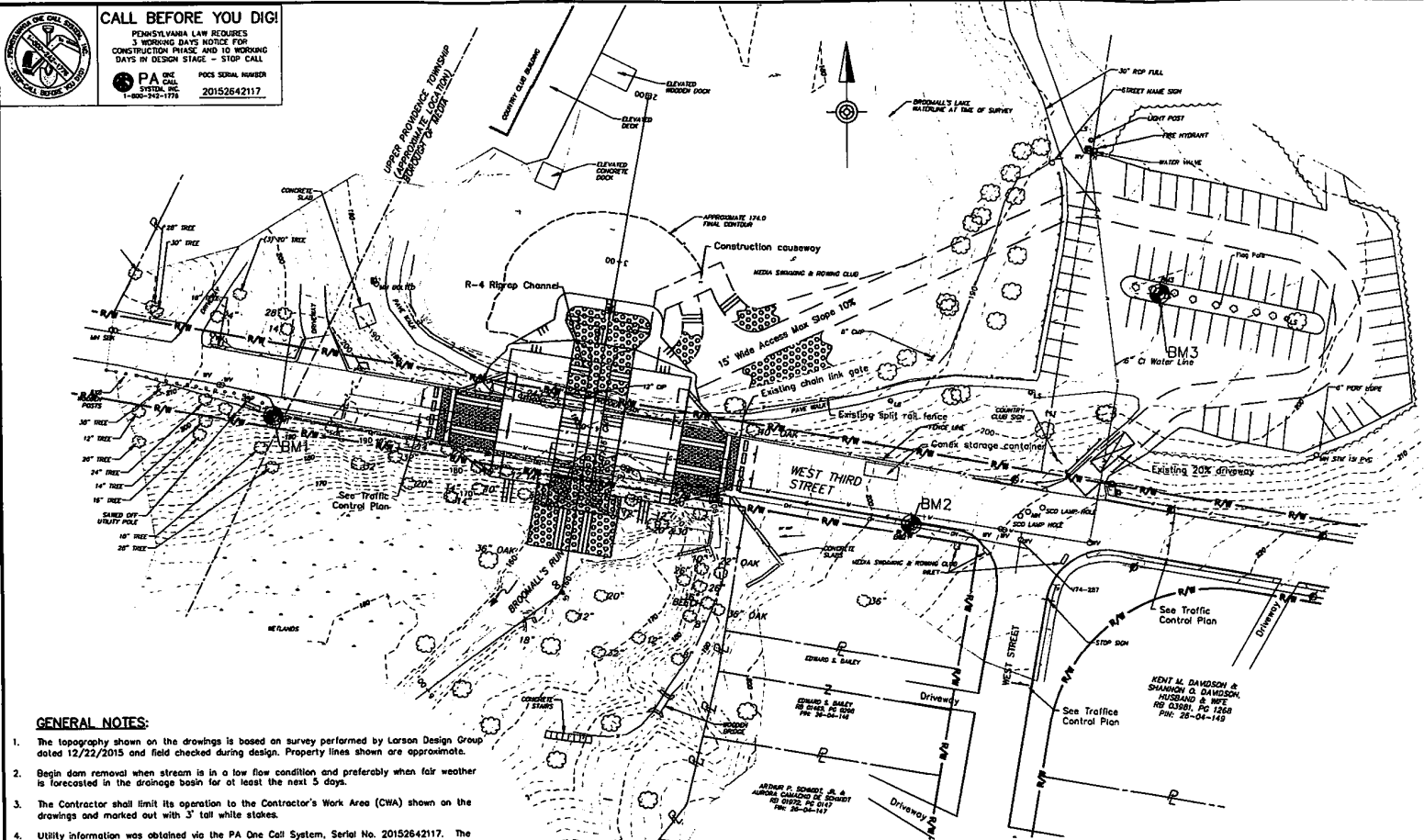
NO.	DATE	REVISION	APPR.
SUBMITTED			
PROJECT COORDINATOR - SLP			
APPROVED			
CHIEF - DESIGN OF PROJECT CONSULTANT - SLP			
APPROVED			
DIRECTOR - BUREAU OF WATERWAYS CONSTRUCTION SERVICES - SLP			
PERSONNEL'S SIGNATURE	DATE	PERSONNEL'S SIGNATURE	DATE
COMMONWEALTH OF PENNSYLVANIA DEPARTMENT OF ENVIRONMENTAL PROTECTION OFFICE OF WATER MANAGEMENT			
PROJECT NO. D23:009-1D1.1			
BROOMALL LAKE DAM BREACH PROJECT BOROUGH OF MEDIA DELAWARE COUNTY, PENNSYLVANIA			
Profile and Cross Section			
DESIGNED BY	DATE	CHECKED BY	
DRAWN BY	SCALE	As Shown	P-1

PRELIMINARY





CALL BEFORE YOU DIG!
 PENNSYLVANIA LAW REQUIRES
 3 WORKING DAYS NOTICE FOR
 CONSTRUCTION PHASE AND 10 WORKING
 DAYS IN DESIGN STAGE - STOP CALL
 PA ONE CALL SYSTEM, INC.
 1-800-PA-1-1776
 PDCS SERIAL NUMBER
 20152642117

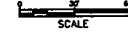


LEGEND

PROPERTY LINE	---
RIGHT-OF-WAY LINE	---R/W---
BUILDING LINE	
FENCE LINE	- - -
SIGN	+
BENCHMARK	⊕
DITCH/SWALE	- - -
DRAINAGE LINE	---
MANHOLE	⊙
WATER MAIN & VALVE	---W---
GAS MAIN & VALVE	---G---
OVERHEAD UTILITIES	---
GUIDE RAIL	---

- GENERAL NOTES:**
- The topography shown on the drawings is based on survey performed by Larson Design Group dated 12/22/2015 and field checked during design. Property lines shown are approximate.
 - Begin dam removal when stream is in a low flow condition and preferably when fair weather is forecasted in the drainage basin for at least the next 5 days.
 - The Contractor shall limit its operation to the Contractor's Work Area (CWA) shown on the drawings and marked out with 3' tall white stakes.
 - Utility information was obtained via the PA One Call System, Serial No. 20152642117. The accuracy or completeness of this data is not guaranteed. Though no utility conflicts are anticipated, the Contractor must still contact the PA One Call System at 1-800-242-1776 for utility information at least 3 days, but not more than 10 days, prior to commencement of an site work. See Utility Listings on this drawing.
 - Complete all work within 60 calendar days upon commencement of site work.
 - For the duration of the contract, protect from damage all private and public property, and structures and trees that are not scheduled to be removed. At the completion of work, restore all areas disturbed by the Contractor and all property damaged by the Contractor to at least pre-work conditions. This would include repairing ruts in the pond and placing No. 2A Coarse Aggregate to repair the road.
 - Conduct all work in compliance with the Erosion and Sedimentation Control Plan described in the contract plans and specifications, unless an alternate E&S Plan is approved by the Department.
 - Minor adjustments to the lines and grades shown on the drawings may be made to facilitate the satisfactory completion of work. Obtain the Department's permission before making any adjustments.
 - Indiscriminate cutting of trees is not permitted. Obtain the Department's permission before cutting and removing any trees.
 - Work in the stream channel only in the area to be excavated.
 - ⊙ Indicates pay item numbers which correspond to those in the Bid Form.
 - Remove 2'x2'x6" precast concrete blocks (approx 15 total) from roadway above dam
 - Remove existing chainlink fence from top of dam and deliver to _____

GENERAL PLAN



UTILITY LISTINGS

COMPANY	ADDRESS	CONTACT PERSON	PHONE	EMAIL
Aqua Pennsylvania Inc.	782 W Lancaster Ave Bryn Mawr, PA 19010	Bill Zahn	610-645-4203	WAZahn@aquaamerica.com
PECO Energy Company Contact: USIC	450 S Henderson Rd, Suite B King of Prussia, PA 19406	Nikkia Simpkins	484-681-5720	nikkiasimpkins@usic.com
Verizon Pennsylvania LLC	15 Montgomery Ave, Floor 2 Pittsburgh, PA 15212	Deborah Barum	XXX	deborah.d.delo@verizon.com

Note: The Contractor shall comply with Act 287 of the General Assembly, as amended, which defines the procedures for notification to Public Utilities prior to excavation, drilling or demolition work using power equipment or explosives.

BENCHMARK TABLE

POINT	ELEVATION	NORTHING	EASTING	DESCRIPTION
BM1	203.03	223,127.36	2,828,358.90	MAG SPIKE IN POLE
BM2	204.10	223,070.87	2,828,741.19	MAG SPIKE IN POLE
BM3	197.12	223,212.58	2,828,888.79	X-CUT ON S.W. BOLT OF LIGHT POLE
BM4	194.32	223,408.51	2,828,791.26	RR SPIKE IN 14" OAK
BM5	187.40	223,633.61	2,828,750.83	BOX CUT ON S.E. CORNER POOL DECK

HYDRAULIC DATA

Drainage Area = 0.55 sq. mi.
 0.27 = 280 cfs
 0.007 = 1030 cfs

PRELIMINARY

NO.	DATE	REVISION	APPR.

PROJECT COORDINATOR - E&P
 CHIEF - DIVISION OF PROJECT DEVELOPMENT - E&P
 DIRECTOR - BUREAU OF WATERWAY CONSTRUCTION AND DESIGN - E&P

PROFESSIONAL'S SIGNATURE DATE PROFESSIONAL'S SIGNATURE DATE
 COMMONWEALTH OF PENNSYLVANIA
 DEPARTMENT OF ENVIRONMENTAL PROTECTION
 OFFICE OF WATER MANAGEMENT

PROJECT NO. D23:009-101.1

**BROOMALL LAKE DAM
 BREACH PROJECT**
 BOROUGH OF MEDIA
 DELAWARE COUNTY, PENNSYLVANIA

GENERAL PLAN

DRAWN BY	DATE	DRAWING NO.
CHECKED BY	SCALE	GP-1
AS SHOWN		

ALL DIMENSIONS AND EXISTING
 CONDITIONS SHALL BE CHECKED
 AND VERIFIED BY CONTRACTOR
 AT THE SITE.