



10th Anniversary Report

July 2011 – December 2021





To preserve and enhance the historic and natural resource of Delaware County's oldest park, founded in 1935 as a Bird Sanctuary and Arboretum.

Friends of Glen Providence Park Mission

Our 10th Anniversary Report!

In 1935, George and Eleanor Butler donated the land for Glen Providence Park to Delaware County for a Bird Sanctuary and Arboretum. The deed specified "That the property shall be used only as a park and kept in as natural a condition as possible save only for the construction of paths or trails for the use of pedestrians." Its elegant stone structures and trails were built by the Works Progress Administration (WPA). In 2002, Glen Providence was determined eligible for the National Register of Historic Places!

Friends of Glen Providence Park was founded in July 2011 in response to the threat to the north end of the park by the proposed replacement dam at 3rd Street, which would destroy 1.1 acres of the park's 33 acres. We advocated, as we continue to do today, to minimize harm to the Glen's woods, wetlands, plants, and wildlife.

Our activities quickly expanded to nature walks, volunteer days, Citizen Science projects, historical research, native tree plantings, summer concerts, and much more, with free and family-friendly events every month (minus some early Covid months) since September 2011!

We are an all-volunteer nonprofit organization and we work in consultation with Marc Manfre of Delaware County Parks & Recreation, which oversees and maintains Glen Providence. We are grateful for his continued support and collaboration with the Friends as we work to revitalize this historical park.

After tens of thousands of volunteer hours over the past 10 years, there is much more than we could capture in this report. The following pages are highlights of our activities. What a busy 10 years it has been!

Stephanie Gaboriault
President, Friends of Glen Providence Park

Board of Directors

Marcia Tate – Vice President
Stephanie Gaboriault
Holly Hoffmann
Lisa Johnson
Charles Randall

Past Board Members

Dylan Atkins
Susan Harrington
Shannon Robards
Rick Sleutaris



History

We were amazed and delighted to uncover the rich history of Glen Providence spanning the First-Nations Okehocking centuries ago, to the 1800s shingle mill when the Glen was called Scroggie Valley, through the park's early decades in the 1900s. We have conducted hundreds of hours of research through local and online archives, antique maps, old newspapers, oral histories, and more — all shared freely on our website, compiled in dozens of articles.

Highlights:

- Researched a 1700s Ghost Story and 1800s Witch Story from local folklore, identifying real people and locations in and around the park!
- Uncovered a detailed 1889 essay by scientist T. Chalkley Palmer describing the landscape, flora, and fauna of the Glen, and visited the Academy of Natural Sciences to see his microscope slides of organisms from the park.
- Discovered that park founders George and Eleanor Reed Butler also founded Delaware County's first golf club, Springhaven Country Club. The Friends connected their grandson, Clifford Butler Lewis, with the club prompting his donation of his grandparents' antique golf clubs.
- Documented the early decades of events in the park: fishing derbies, classical concerts, July 4th fireworks, and more, right up through the 1980s Halloween Hauntings!



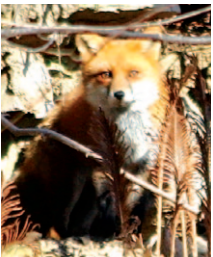
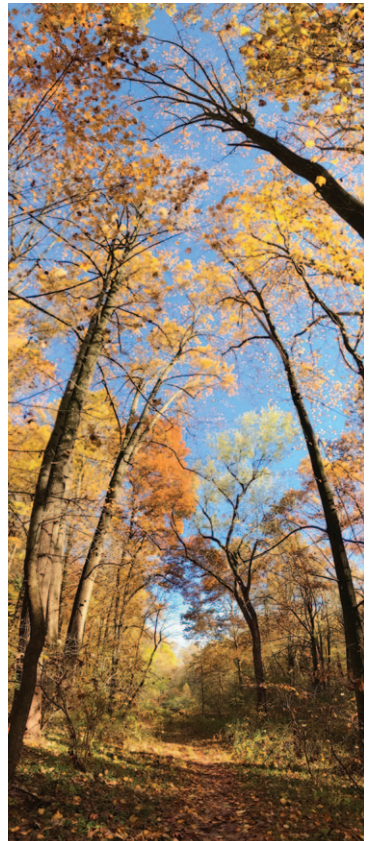
Clockwise, top left — 1930s Entrance Sign by G. J. Ulshafer; Clifford Butler Lewis at his Grandmother's Commemorative Plaque; T. Chalkley Palmer in 1903; WPA Footbridge.

Nature & Citizen Science

It has been a joy (and a lot of work!) to document more than 200 species in the Glen and to contribute to Citizen Science projects. We've participated in eleven consecutive Christmas Bird Counts, and we were thrilled to find and verify two surviving American Chestnut trees in the Glen Providence woods. We share our findings through our website, monthly newsletters, Facebook, YouTube, and nature walks!

Highlights:

- 129 bird species documented on eBird, with over 800 checklists submitted – and we monitored a Great Horned Owl nest in Spring 2020!
- 19 species documented through hundreds of entries to the PA Amphibian & Reptile Survey – including 3 salamanders, 6 frogs and toads, 7 turtles, and 3 snakes.
- Over 58 tree species documented, with many entered on OpenTreeMap.
- Hundreds of wildlife and plant photos on Facebook, with educational captions.



Clockwise, top left – Eastern Bluebird; Piggybacking Turtles; Shingle Mill Trail; Turkey Tail Woodpecker in Flight; Red Fox; Pileated Woodpecker on a Tree Trunk.

1.1 Acre Advocacy

In June 2011, we learned that a portion of Glen Providence Park was under threat from the planned reconstruction of Broomall's Dam, which would destroy 1.1 acres of the 33 acre park where there is currently a serene wooded entrance, wetlands, and mature trees – replacing them with earthfill for a new, larger dam. The dam's ownership, legal, financial, and safety issues are complex, and the project is not resolved. We advocate to protect the 1.1 Acre and all 33 acres of Glen Providence Park.

Highlights:

- Raised the alarm in June 2011 and called on the public to attend Media Borough meetings to seek a better resolution to the 3rd Street Project.
- Countless hours researching alternatives, informing the public, attending legislative meetings, creating and distributing educational flyers, and searching for any way to minimize the impact of the project on the Glen.
- Documented and explained the projects legal twists and turns in more than 30 articles on our website, including a guide to hundreds of pages of public documents.
- Held informational sessions at the dam with the PA DEP and American Rivers.
- Documented the 1.1 Acre's native plants and wildlife in a photojournal, and mapped 76 trees on OpenTreeMap.
- In 2019, when the PA DEP partially removed the dam for safety reasons, we led a community coalition advocating for a footbridge to reconnect Media and Upper Providence – and presented a detailed statement with links and diagrams to County Council explaining why the reconstruction of the dam would have an Adverse Impact on Glen Providence Park.
- Since 2019, the Friends have collaborated with Keep Media Green on advocacy involving the land surrounding Broomall's Dam.



Clockwise, top left – Birch Bark; MPFS Class in the 1.1 Acre; Trout Lily; Wood Frog.

Service & Stewardship

The Friends' first volunteer project in September 2011 was to clear the concert stage from overgrowth and sediment. Every year since, we have organized cleanups and work days! In 2013, we started a Friday morning Conservation Crew that removes invasive shrubs and vines that strangle beneficial native plants and crowd the trails, and work on other projects to support plants and wildlife in the park. We have painted trail blazes, installed Spotted Lanternfly traps with the Conservation District, skimmed the pond, and cleared tree falls blocking the stream and trails.

Highlights:

- Held 20 park cleanups where 448 volunteers worked a combined 837 hours keeping the park and stream healthy for its plants, wildlife, and human visitors.
- Our dedicated Conservation Crew worked over 1,046 hours clearing 554 contractor bags of invasive plants and worked on many other projects.
- With County approval, we created a sandbag dam in 2020 to keep up the pond level until the County could implement a more permanent solution.
- Received the 2016 Organizational Stewardship Award from Chester Ridley Crum Watersheds Association.



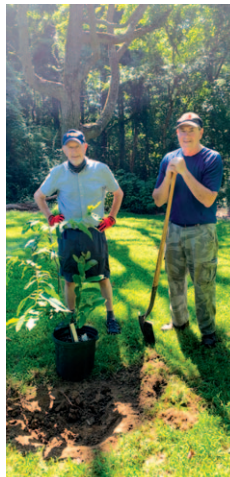
Clockwise, top left – Clearing the Stage in 2011; Spring Cleanup; 2016 CRC Stewardship Award; Conservation Crew; Friends with Delaware County Parks & Recreation Superintendent.

Plantings & Improvements

From annual planting days to collaborations with local organizations, the Friends have strived to enhance this beautiful park. The native trees, shrubs, and perennials we plant help to restore the forest, protect the stream, and stabilize the hillside and streambank. In addition to helping control erosion, the plants benefit wildlife by providing habitat and seeds, nuts, fruits, and nectar for mammals, birds, butterflies, and other pollinators.

Highlights:

- At our annual plantings, 258 volunteers worked 820 hours to plant 254 native trees and shrubs, and hundreds of woodland plants.
- Advised and assisted organizations in seven smaller planting projects.
- Funded and worked with volunteer Rick Sleutaris in 2017 to install 14 trail posts with trail directions and mileage.
- In 2017, the Friends commissioned and funded informational kiosks for each of the three entrances from Media Presbyterian Church Senior Craftsmen volunteers.



Clockwise, top left – Planting; National Public Lands Day 2015; Trail Posts Installation; American Chestnut Planting; Main Entrance Kiosk; Digging.

Community & Education

Inspired by the rich history of community events and involvement in the early decades of Glen Providence Park, the Friends have held free and family-friendly events for the community every month since September 2011 (minus some early Covid months). We have collaborated with many local organizations and met with school and Scouts groups in the park. Thanks to a generous volunteer, we now have a number of educational videos on YouTube!

Highlights:

- Environmental education through 74 free and family-friendly nature walks — birds, trees, fungi, geology, herpetology, native ephemeral plants and much more, attended by over 1,300 adults and children.
- Startup assistance to several Friends groups of other local and County parks.
- History and nature presentations to several local groups and organizations.
- Regular education and updates about the park to our more than 1,800 Facebook fans and more than 500 monthly email newsletter subscribers.
- Over 300 articles on our website covering events, history, nature sightings, Citizen Science, Broomall's Dam, summer Arts in the Park, and even haikus!



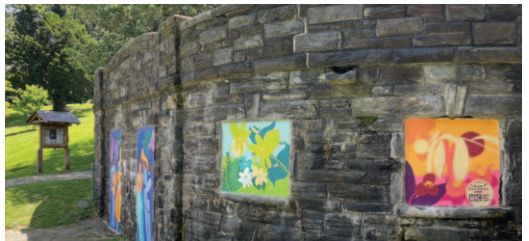
Clockwise, top left — Pond Walks and Tree Walks for Kids; Naturalist Walk; 10th Anniversary Celebration; Bird Walk.

Arts in the Park

Delaware County held a summer concert series in Glen Providence Park from 1937 through the 1970s. In 2011, we uncovered the historical WPA stage from years of sediment and vegetation. In 2012, we returned summer concerts to the park, in a wide array of musical styles since — from classical to rock, bluegrass to jazz, African drumming to Andean folk, and singer-songwriters to opera — along with Shakespeare in the Park, storytelling, and ballet!

Highlights:

- 31 free summer Arts in the Park performances at the stage (with no repeat performers!) attended by thousands of adults and children.
- Held an 80th Anniversary Celebration (on Halloween!) for Glen Providence Park with enactments by Hedgerow Theatre of the park's 1700s Ghost Story and 1800s Witch Story, with the audience in full trick-or-treating costumes!
- In 2021, collaborated with Media Arts Council and fundraised for vibrant murals on the cemented windows and doors of the main entrance — the murals, painted by local artists, depict flora and fauna in four seasons in the Glen and summer concerts at the stage.



Clockwise, top left — Concert Audience; Hedgerow Theatre Shakespeare in the Park; Halloween 80th Birthday; Entrance Murals; Tiffany Jones.



Expenses & Volunteer Hours

Average Annual Expenses

From 2012 through 2021, our average annual expenses were just \$7,833.81. Board member contributions covered our administrative costs, so donations went directly into stewardship, programming, and park improvements. The reason we have accomplished so much on such a small budget is the sheer number of volunteer hours we have donated.

Volunteer Hours

Our board and committee volunteers have worked more than 20,000 hours, planning, organizing, researching, advocating, documenting, planting, beautifying, and revitalizing Glen Providence Park. According to nonprofit expert Independent Sector's average 2011-2021 value of volunteer hours of \$25.34, we donated over \$506,800 of our time. That is value to the community, including Media Borough and Upper Providence – and to Delaware County, the owner and caretaker of Glen Providence Park.

This conservative estimate of \$506,800 in dollar value does not include maintenance costs saved, increased real estate values (our photographs have been used to market local properties!), the economic impact to local businesses from visitors drawn by our events, and the value to families attending our free programs.

Perhaps most importantly, it does not include the improvement to wildlife habitat or the current and future eco-benefits of the 254 native trees and shrubs we planted. The benefits of revitalizing this historical Delaware County park – to the community and to future generations of humans and wildlife – are ultimately unmeasurable.



We welcome new volunteers and donations!

Donations may be made through our website or by mail.
Friends of Glen Providence Park, P.O. Box 1688, Media, PA
www.glenprovidencepark.org

Donors

Thank you for your donations over the last 10 years, making our free and family-friendly events and stewardship possible as an all-volunteer organization!

Kathlee Adamson
Dylan & Patty Atkins*
Faith & Peter Balsama*
Larry & Kathy Bame
Mary Jo Baranski
Rosie & John Best
Rima Bishar
Art Brown
Ron Brzowski
Erica Burman
Mary Ann & Chris Bursk
Michael Campbell
& Susan Garrison*
Bernadette Carter
Addie Cianella*
Linda Cohen
Rebecca Collins
Kat Crowner
Kent Davidson*
Steven DeAngelis
Collette Decker
Peter Devaney
Chris Dietrich
Robert Donegan
Theresa Dotts
Paul Downie
Jason & Angela Duckworth
Amy Duffy
Camille Easterbrook
Mary Lou Erk
David & Gina Eberly
Linda Emory*
Richard Everill
Ronnie Fine
Anne Fore
Brittany Forman
Judy Fowler
Stephanie & Randy Gaboriault*
Bob Gallagher
Elaine Gallo
Janice Gilbert
Noreen Goetz
Luana Goodwin
Adrienne Gordy
Kristen Gorman
Laura Graham
Kimberly Greene
Jean Griffin
Noelle Gruber
Brian Hall & Celia Chen
Courtney Haran
Eugenia, William
& Constance Harper
Susan & Chip Harrington*
Walter & Silvana Hart
Lynn Hartle & John MacLeod

Kathy Henderson
Tom & Wendy Hibberd*
Nancy Hoffmann
Holly & Rich Hoffmann*
Maryann Hooker
Rena Huntsman
Paul Indorf
David & Sandy Irwin-Stoll
Lisa Johnson & Ted Laarkamp*
Ira Josephs
Ian Kauffman
Beth Kavitski
Kristen Keel
John Kenney
Michael Kinsley
Geoffrey Kitson
Molly Klein*
Elizabeth Klinger
Tina Koiva
Bob & Debbie Konar
Ross & Diedre Konar
Bill Kreider & Linda Trout*
Barbara Kressler
Robert Kunz & Annette Richter
Hazel Lafleur-Vetter
Patricia Lambert
Kristen Laubach
Joseph Leach
Jim Laurence
Ann & John Laye
Rebecca Lee
Lee Mayorga family
Ruth Lerario
Marie Lesutis
Adam Levine
Andrea Linvill
Jairo Lora
& Margaret Wheatley
Linda Lorino
Bob & Phyllis Markowitz
John & Martina Martin*
William Martin
Tracy McIntosh
Elizabeth McClearn
Caitlin McMahan
Kellie McShane-Harris
Gerald & Cheryl Meyer
Cindy Miller
Robert & Abigail Moore
Sandra Morales
Mandy Kyle Morroni*
Nancy & Gordon Mott
Jaime Murray
Jim O'Brien*
Mary Lou O'Connell
Eric Owen

Susan Owens*
Susan & David Palmer
Larry Pattinson
Gianie Perez
Mark & Mariana Piton*
Sophie Quinn-Judge
Robert & Sue Redfern
Jared Reed
Tom Reeves*
Sharlyn Rhee
Janet Riddle*
Lora Rines
Shannon Robards*
Sallie & Rick Robinson
Anselma Rodriguez
Elizabeth Romaine
Tony & Barbara Rooklin
Linda Rooney
Terry Rumsey
& Robin Lasersohn*
Tracy Sadowski
Paul & Cheryl Schlenker*
Robert Scott
Margie Seiler
Karen & John Serwatka
John Shiner
Lynne & Skip Shuda
William Silverstein
& Amy Moulton
Rick & Jane Sleutaris
Julie Smith
Dale & Jo Snead
Ray Solis
Maggie & Vegard Sorby
Joseph & Karen Speakman
Renee & Mike Staiber
Brian Stevenson
Sari Steuber
Michael Straw
Marcia & George Tate*
Karen Taussig-Lux
George & Rita Tilghman
Kevin & Mary Van Horn
Marguerite Van Lear
Iris Washington
Christopher Welc
John Wenderoth
Gail Whitaker
Stanley Witomski
Marlise Wise
Scott Wittman
Karen & Ed Woomer
James Ziegelhoffer
& Jeanne Wordley

* 2012 Founding Funders

Special Thanks to all who have helped us in so many ways over the past 10 years.

First and foremost, Marc Manfre and his staff at Delaware County Parks & Recreation, without whom none of our work would be possible.

Delaware County Conservation District
Delaware County Planning, and Delaware County Council

Arts in the Park Sponsors

Media Recreation Board
Blueberry Bog
Desert Rose
Diego's Cantina
Media Open Streets
Media Rotary Foundation
PA Council on the Arts
Seven Stones Gallery & Café
Shere-E-Punjab
Sterling Pig
West End Flats
West End Walk

Al Gurarente
Hedgerow Theatre
Keep Media Green
Adam Levine
Clifford Butler Lewis
EllieReed Lewis
Mayor Bob McMahon
Media Arts Council
Media Borough
Media Business Authority
Media Fellowship House
Media Historic Archives
Media Lions Club
Media Presbyterian

Untours Foundation
Upper Prov. for Open Space
William VanLeer
Visit Media, PA

Organizations & Individuals

Academy of Natural Sciences
American Chestnut Foundation
Birding Club of Delaware Co.
Boy Scouts & Cub Scouts
Carol Carmon
CRC Watersheds Assoc.
Walt Cressler
Dave Eberly
Delaware Co. Hist. Society
Delaware Co. Inst. of Science
Greater Phila Cultural Alliance
Girl Scouts & Brownies

Church Senior Craftsmen
Media Prov. Friends School
Media Upper Prov. Library
Mill Creek Valley Garden Club
PA Amphibian & Reptile Survey
PA Rep. Chris Quinn
Patrick Burke
Providence Garden Club
Reformation Lutheran
Church of Media
Taylor Memorial Arboretum
Transition Town Media

Businesses

Café Isla
DandeLions Digital
Delaware County Press
Earth & State
Earthwise Landscapes
Garden Influence
Garrison Law
JMW Entertainment Group
Market Acumen
Media Copy
Media Town Talk
Pinocchio's Restaurant
Professional Duplicating
Redbud Native Plant Nursery
Seven Stones Café
Springhaven Country Club
TenEleven Designs
The Studio at 33 East
320 Market Café

Committee Volunteers: Dylan Atkins, Ron Brzowski, Patrick Burke, Krista Dimond, Linda Emory, Deb Felton, Stephanie Gaboriault, Chip Harrington, Susan Harrington, Stan Hibberd, Holly Hoffmann, Rich Hoffmann, Lisa Johnson, Kristen Keel, Robin Lasersohn, Aura Lester, Nate Pentz, Charles Randall, Shannon Robards, Mike Rolli, Terry Rumsey, Paul Schlenker, Jane Sleutaris, Rick Sleutaris, Julie Smith, Dale Snead, Michael Straw, George Tate, Marcia Tate

Walk Guides: Tom Bush, Ted Cavey, Nick Crocetto, Dave Eberly, Stephanie Gaboriault, Al Guarente, David Hewitt, Holly Hoffmann, Aura Lester, Kyle Loucks, Chris McNichol, Nick Pulcinella, Charles Randall, Rick Ray, Tom Reeves, Shannon Robards, Mike Rolli, Gary Stolz, George Tate, Marcia Tate, John Wenderoth

And— All who volunteered, attended a Friends of Glen Providence event, read our newsletters, followed us on Facebook and anyone else we may have overlooked. ♥

Photo credits: Stephanie Gaboriault, George Tate, Marcia Tate
©2022 Friends of Glen Providence Park

Printed on 100% PCW, PCF & FSC certified paper, manufactured with 100% renewable energy.

